



THE RITZ-CARLTON
YACHT COLLECTION

INTRODUCING THE YACHT EXPERIENCE

MAY 2021

MEET OUR SALES TEAM



DOUGLAS PROTHERO
CEO

+1 305.458.2646

douglas.prothero@ritz-carltonyachtcollection.com



ANGELA COMPOSTO
SVP, Sales & Marketing
+1 954.850.5827

angela.composto@ritz-carltonyachtcollection.com



DAVID FREDERICKS
Sr. Director,
Meetings, Incentives,
Charters, and Events

+1 954.998.8481

david.fredericks@ritz-carltonyachtcollection.com



TOMÁS BACA-CRUZ
Inside Sales Specialist

+1 786.204.1115

tomas.bacacruz@ritz-carltonyachtcollection.com

YACHT SPECIFICATIONS



624
FEET
(190 METERS)

25,400
TONS

149
SUITES

298
GUESTS

246
CREW

1 to 1.21
CREW-TO-GUEST
RATIO

1 to 85.2
GUEST-TO-SPACE
RATIO

INTRODUCING EVRIMA



SETTING SAIL IN 2021

MEANING: DISCOVERY; ORIGIN: GREEK

Evrima inspires travelers to immerse themselves in exceptional experiences, explore new destinations and foster the spirit of adventure

BRAND VALUE



THE RITZ-CARLTON

The Ritz-Carlton inspires life's most meaningful journeys.

- AWARD-WINNING LUXURY HOTEL BRAND
- STRONG BRAND RECOGNITION GLOBALLY
- HOSPITALITY AT A GOLD STANDARD
- LEGENDARY PERSONALIZED SERVICE

SERVICE



SERVICE AT A GOLD STANDARD

Legendary service is provided by the Ladies and Gentlemen of The Ritz-Carlton, with almost one crew member for every guest.

- WARM
- SINCERE
- PERSONALIZED
- ANTICIPATORY

ONE OF THE HIGHEST SPACE RATIOS AT SEA

Measuring 624 feet in length and accommodating no more than 298 guests, *Evrima* has one of the highest space ratios in luxury cruise, with **85.2 square feet of space per guest**.

CRUISE LINE	SHIP(S)	LENGTH (FT)	LENGTH (M)	TONNAGE	GUESTS	CREW	CREW-TO-GUEST RATIO	GUEST-TO-SPACE RATIO
RCYC	<i>Evrima</i>	624	190	25,400	298	246	1 to 1.2	1 to 85.2
REGENT	<i>Seven Seas Explorer</i>	735	224	55,254	750	552	1 to 1.4	1 to 73.7
CRYSTAL	<i>Crystal Serenity</i>	820	250	68,870	980	655	1 to 1.5	1 to 70.3
SILVERSEA	<i>Silver Muse</i>	698	213	40,700	596	411	1 to 1.5	1 to 68.3
SEABOURN	<i>Seabourn Encore, Ovation</i>	690	210	40,350	600	419	1 to 1.4	1 to 67.3

The guest to space ratio divides the amount of ship space (gross registered tonnage) by the number guests. The higher the space ratio, the more space per person.

THE EXPERIENCE

Designed to combine the luxury lifestyle of The Ritz-Carlton with the casual freedom of a yachting vacation, The Ritz-Carlton Yacht Collection will offer itineraries at a relaxed pace and introduce guests to the local cultures of each destination through curated immersive experiences ashore.

ALL-INCLUSIVE VALUE

PERSONALIZED SERVICE OF
THE RITZ-CARLTON®

MULTIPLE DINING
EXPERIENCES, 24-HOUR IN-
SUITE DINING, PLUS
SPECIALTY DINING

ALL-SUITE
ACCOMMODATIONS, EACH
WITH PRIVATE TERRACE

UNIQUE MARINA-STYLE
PLATFORM, DIRECT ACCESS
TO WATER

VARIETY OF SOCIAL SPACES
FOR RECEPTIONS &
ENTERTAINMENT

RELAXED YACHTING PACE,
OVERNIGHTS & DAYTIME
PORTS OF CALL

CURATED, IMMERSIVE
DESTINATION EXPERIENCES
ASHORE

ALL-INCLUSIVE VALUE



- LUXURY ALL-SUITE ACCOMMODATIONS
- MULTIPLE DINING EXPERIENCES, INCLUDING 24-HOUR IN-SUITE DINING
- BEVERAGES IN-SUITE AND THROUGHOUT THE YACHT
- ONBOARD ACTIVITIES AND ENTERTAINMENT
- ONBOARD GRATUITIES
- WI-FI

DINING EXPERIENCES

INCLUDED

OPEN SEATING

MISTRAL



TALAAAT NAM



THE POOL HOUSE



THE EVRIMA ROOM



LIGHT BITES

THE BAR



THE LIVING ROOM



THE MARINA TERRACE



24-HOUR IN-SUITE DINING



ADDITIONAL FEE

SPECIALTY*

S.E.A.

DINING PRIVÉE

**Reservations required*



MISTRAL
MEDITERRANEAN INSPIRED
DECK 8





THE POOL HOUSE
CASUAL VARIETY
DECK 5



THE EVRIMA ROOM

LOCALLY INSPIRED

DECK 4









THE LIVING ROOM
COFFEES AND PASTRIES
DECK 4



THE MARINA TERRACE
COCKTAILS AND LIGHT BITES
DECK 3





OUR SUITES

- 149 SUITES, EACH WITH PRIVATE OCEAN-VIEW TERRACE
- HIGHEST PERCENTAGE OF LARGER SUITES IN LUXURY CRUISING
- TWO OWNER'S SUITES, EACH WITH PRIVATE WHIRLPOOL
- LOFTS AND COMBINABLE SUITES WITH FLEXIBLE CONFIGURATION
- SUPERIOR GUEST AMENITIES



SUITE AMENITIES AND FEATURES

Wake up every morning relaxed and carefree in one of our 149 expertly appointed suites. Designed to combine the modern elegance of The Ritz-Carlton with the casual luxury of the world's most magnificent super yachts, our suites set a new standard for luxury travel.

PRIVATE OCEAN-VIEW
TERRACE

DOUBLE VANITY
BATHROOMS

ESPRESSO MACHINE
WITH COMPLIMENTARY
COFFEES AND TEAS

24-HOUR IN-SUITE
DINING

COMPLIMENTARY WI-FI

LUXURIOUS CUSTOM
KING BED SYSTEM AND
LINENS

MINI-BAR PROVISIONED
TO GUESTS'
PREFERENCES

COMPLIMENTARY
BOTTLE OF CHAMPAGNE
UPON ARRIVAL

INDIVIDUAL ROBE AND
SLIPPERS

ACCESS TO A PERSONAL
CONCIERGE IN ALL SUITE
CATEGORIES

THE OWNER'S SUITE

QUANTITY: 2

SUITE: 1091 SQ FT | 101 SQ M

TERRACE: 635 SQ FT | 59 SQ M



THE VIEW SUITE

QUANTITY: 4
SUITES 732-733

SUITE: 544 SQ FT | 51 SQ M
TERRACE: 108 SQ FT | 10 SQ M

SUITES 734-735

SUITE: 574 SQ FT | 53 SQ M
TERRACE: 129 SQ FT | 12 SQ M





THE LOFT SUITE

QUANTITY: 12
SUITE: 611 SQ FT | 57 SQ M
TERRACE: 81 SQ FT | 7.5 SQ M





THE GRAND SUITE

QUANTITY: 14

SUITE: 587 SQ FT | 55 SQ M

TERRACE 108-110 SQ FT | 10-11 SQ M



THE SIGNATURE SUITE

QUANTITY: 27

SUITE: 429 SQ FT | 40 SQ M

TERRACE: 81-118 SQ FT | 7.5-11 SQ M



THE TERRACE SUITE

QUANTITY: 90

SUITE: 300 SQ FT | 28 SQ M

TERRACE: 54-81 SQ FT | 5-7.5 SQ M



CONNECTING AND CONVERTIBLE SUITES

All suites are designed for two (2) guests, but many can be connected to satisfy the needs of families or to appeal to meeting planners. An innovative system offers the flexibility to transform connecting suites into larger spaces by removing a panel of the wall.

All connecting suites include:

- An expanded private terrace
- Two (2) luxury custom king bed sleep systems
- Two (2) in-suite safes
- Two (2) double vanity bathrooms, each with a modern shower system
- Three (3) digital flat screen televisions
 - Two (2) in Terrace-to-Terrace configurations

Terrace-to-Grand (connected)



Terrace-to-Signature (convertible)



Terrace-to-Terrace (convertible)



CONNECTING AND CONVERTIBLE SUITES

INNOVATIVE WALL SYSTEM

Flexible configuration options allow connecting suites to expand to satisfy the needs of families to appeal to meeting planners seeking to provide similar accommodations for their top performers.

The opening measures 7.2 feet wide by 7.2 feet high (2.2 meters wide by 2.2 meters high).

CONNECTING SUITES

Of the 149 suites on board, the connecting suites total 43 single-suite configurations. If all connecting suites are utilized as single-suite configurations, inventory reduces to 106 suites.

Select Terrace Suites (18 total) are convertible suites that can be configured as an extended living and dining area or remain a second bedroom when connected to the adjacent suite.

Three (3) combinations of suite categories are available for connecting suites:

Terrace-to-Terrace: 24 total (12 Convertible)

Terrace-to-Signature: 7 total (Three (3) Convertible)

Terrace-to-Grand: 12 total (Three (3) Convertible)

THE MARINA

MULTI-FUNCTIONAL PLATFORM

DIRECT ACCESS TO THE WATER FROM DECK 3

COMPLIMENTARY WATERSPORTS DURING
PORT DAYS WHILE AT ANCHOR*

- PADDLEBOARDS
- WINDSURF BOARDS
- KAYAKS
- SAILBOATS
- SNORKELING ACCESSORIES

**Weather and local authorities permitting*





PUBLIC SPACES

THE POOL
DECK 5

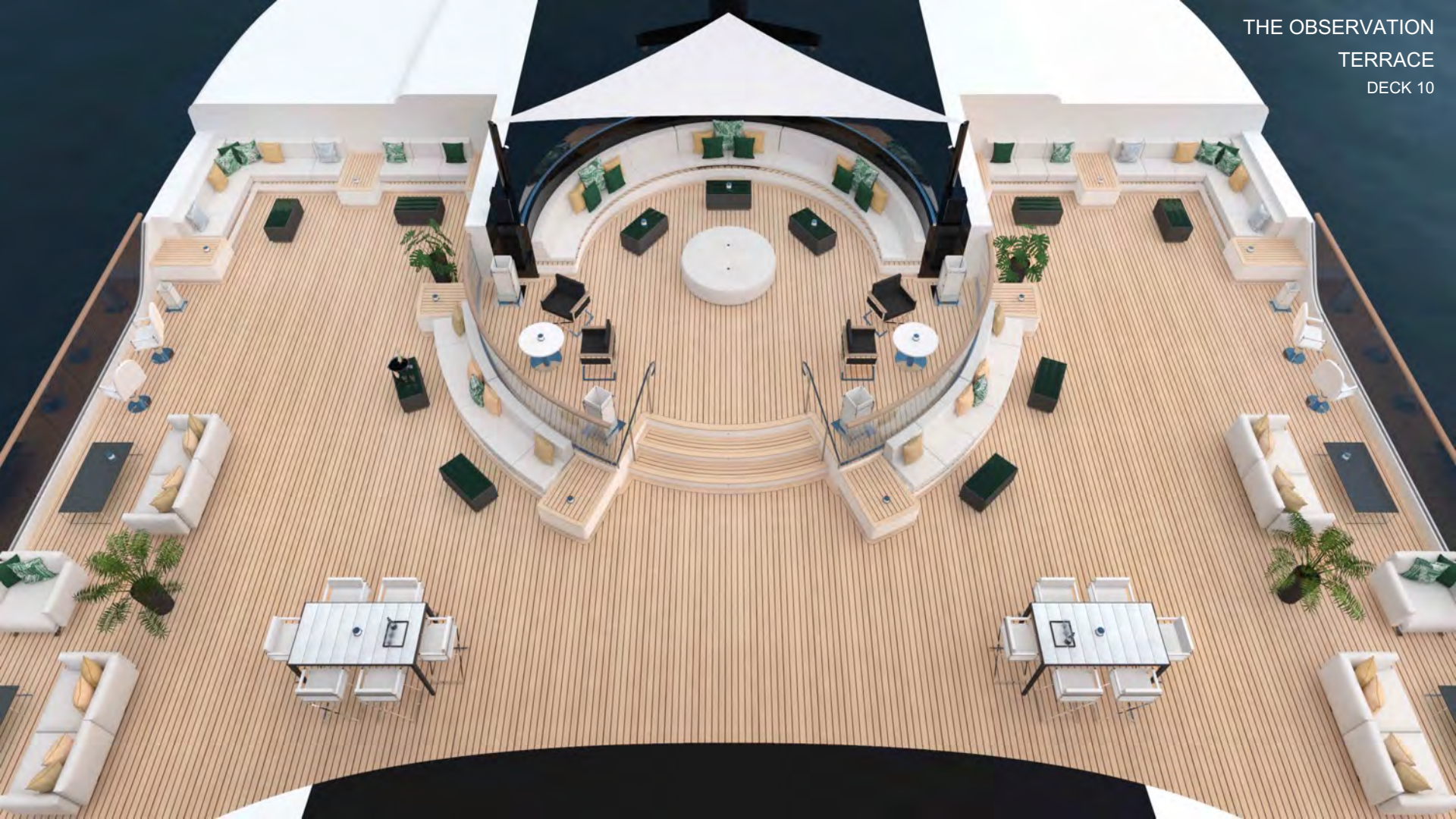


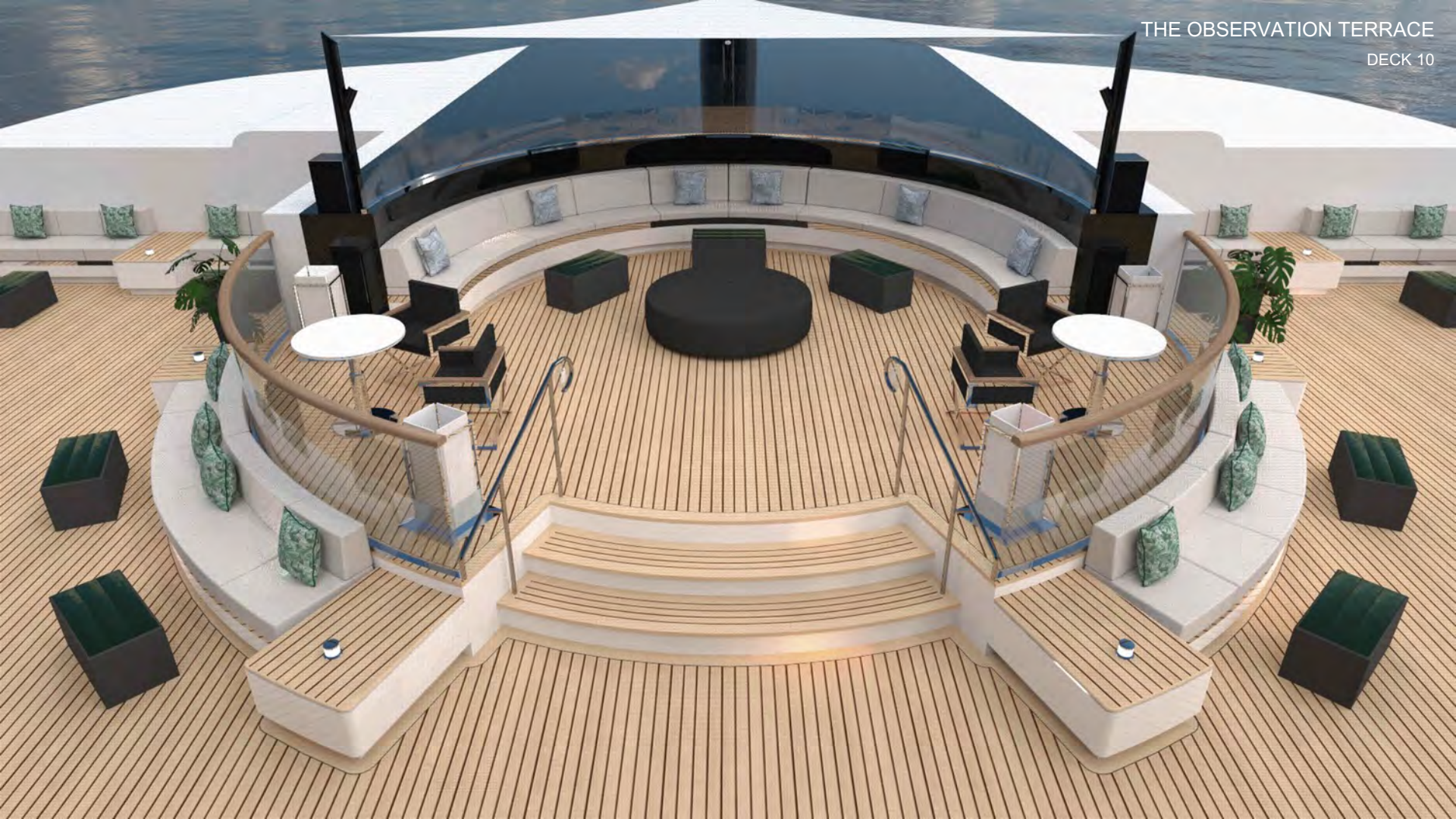
- INTIMATE, RELAXED, CASUALLY ELEGANT ATMOSPHERE
- INTUITIVE, RESIDENTIAL FEEL
- LOUNGE AND BAR OFFER A VARIETY OF ENTERTAINMENT EXPERIENCES
- ACTIVELY SOCIALIZE OR ENJOY PRIVACY
- PEACEFUL RETREAT BY DAY, SOCIAL SCENE BY NIGHT





THE OBSERVATION
TERRACE
DECK 10













SPA AND WELLNESS

- SPA DESIGNED AND OPERATED BY THE RITZ-CARLTON®
- INDOOR AND OUTDOOR TREATMENT ROOMS AND RELAXATION AREAS
- BEAUTY LOUNGE AND GENTLEMEN'S GROOMING SALON
- TECHNOGYM EQUIPMENT
- GROUP EXERCISE CLASSES
- PERSONAL TRAINING
- FITNESS ON DEMAND



THE RITZ-CARLTON SPA OFFERINGS

Guests can escape to their on personal oasis at The Ritz-Carlton Spa to indulge in the scents and delights from around the world while enjoying a relaxing massage or a nourishing facial.

SPA SERVICES:

- Massages
- Facials (for both ladies and gentlemen)
- Skin Treatments
- Salon Services
- Barber Services



An indulgence in a moment,
a moment of serenity or uplift,
an awakening or an escape, the spa
experience is often something
different for everyone. The Spa
experience aboard The Ritz-Carlton
Yacht Collection invites you to indulge
in scents and delights from around the
world. Inspired by the destinations we
visit and captivated by your needs,
our treatments, inspired by nature,
refresh the body and renew the spirit.
Afloat here, life is afloat and still, away
from the world, discover your oasis at sea.

Spa Menu


THE RITZ-CARLTON
YACHT COLLECTION

SPA

GYM OFFERINGS

In addition to the spa, the onboard Fitness Center is home to a health and wellness program integrating fitness and spa with lectures and nutrition that can be customized to fit guests' needs.

FITNESS CENTER OFFERINGS:

- Personal Training
- Group Exercise Classes
- Private or Group Yoga Classes
- Fitness on Demand Access

















RITZ KIDS

- FAMILIES EXPLORING THE WORLD TOGETHER ARE WELCOME ABOARD
- DEDICATED SPACE ON BOARD FOR CHILDREN AGES 4 TO 12
- ENHANCED SERVICES AVAILABLE DURING HOLIDAYS AND SUMMER MONTHS

MORNING SESSION: 9:00AM – 12:00PM \$45

AFTERNOON SESSION: 1:00PM – 4:00PM \$45

EVENING SESSION: 6:00PM – 9:00PM \$65



RITZ KIDS PROGRAMMING



The Ritz Kids program is geared toward children from ages 4 to 12. Four key pillars are designed to inspire natural curiosity and creativity and to engage their senses.

OCEANS & MARINE LIFE: Examining our relationship with water and marine life while enlivening a natural curiosity into the underwater world of sea creatures

Sample activities: Water Cycle Craft, Create a Creature

DESTINATIONS AND THEIR CULTURES: Celebrating the cultures from around the world through art, music, theatre and play

Sample activities: Culture and Clay, Mystery Detective

OCEAN STEWARDSHIP AND SAILING: Shining a light on traditional and modern sailing practices including navigation, marine communication and ship stability

Sample activities: Destination Navigation Chart, Ropes and Knots

ENVIRONMENTAL RESPONSIBILITY: Promoting our role in the health of our planet for the future including sustainability, resource consumption and protecting our ecosystem

Sample activities: Water Sampling Science Experiment, Yacht Sustainability Systems

RELAXED PACE



- MORE OVERNIGHTS IN PORTS OF CALL
- MOST VOYAGES RANGE 7-10 NIGHTS
- ABILITY TO COMBINE BACK-TO-BACK VOYAGES WITHOUT REPEATING PORTS
- INTIMATE SIZE ALLOWS ACCESS TO COVETED YACHTING DESTINATIONS

THE SHORE COLLECTION



CURATED IMMERSIVE EXPERIENCES TO
SUIT VARIOUS INTERESTS AND ACTIVITY
LEVELS

- ICONIC SIGHTS
- STIRRING THE SENSES
- CULTURAL CONNECTIONS
- ACTIVE EXPLORATIONS
- EPICUREAN EXPERIENCES

CONCIERGE ASHORE FOR CUSTOM
ARRANGEMENTS OR PRIVATE EXCURSIONS

ENTERTAINMENT AND ENRICHMENT

- Led by the Entertainment & Enrichment Director, onboard entertainment staff will feature in-house quartet comprised of one pianist, one vocalist, one guitarist and one drum/sax musician.
- Partnerships with the local arts and music communities and discussions led by renowned experts and lecturers will bring local culture from shoreside to onboard.
- A detailed activities program will feature elements such as classic movies, themed dinners with curated entertainment and lectures and an educational and engaging Ritz Kids children's program.
- A global network of world-renowned entertainers and enrichment artists will join the yacht for specific sailings to suit the regions we visit.



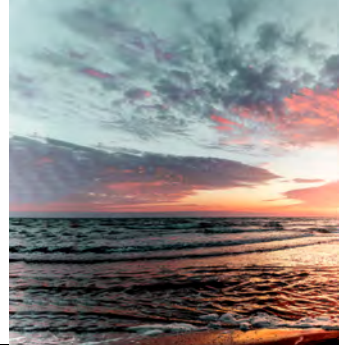
WELLNESS VOYAGE

FEB 20, 2022 | 7 NIGHTS | SAN JUAN TO PHILIPSBURG

Discover tranquility in the heart of the Caribbean on a seven-night wellness voyage through the tropics. Join Wellness Ambassador Nora Tobin for an immersive well-being program inclusive of interactive workshops, daily fitness offerings and mindful moments designed to restore the mind, body and soul.

- Cultivate mindful moments with daily yoga sessions and guided meditations.
- Reconnect with nature on a selection of transformative adventures ashore.
- Learn to craft a variety of clean cocktails with fresh fruit juices, herbs and natural sweeteners.
- Discover stress-reducing practices and deep sleep techniques through a series of immersive wellness workshops.
- Release tension and find inner calm through a restorative treatment at The Ritz-Carlton Spa.
- Reserve one-on-one personal training and nutritional coaching sessions during your voyage and continue your wellness journey with Nora through post-voyage consultations. *

**Limited availability, reservations are encouraged. Additional fee may apply.*



SPECIAL OCCASION PACKAGES

WEDDINGS AND VOW RENEWALS - \$900 PER COUPLE / \$450 PER GUEST

Our Wedding and Vow Renewal package allows guests to celebrate their special day with loved ones while onboard, with a ceremony officiated by the captain* and pre- and post- ceremony reception and toast.

This package includes lunch or dinner at our Michelin-inspired specialty restaurant or in our Dining Privéé, bouquets and boutonnieres for the bridal party, live music and a personalized cake.

CELEBRATIONS - \$950 PER COUPLE

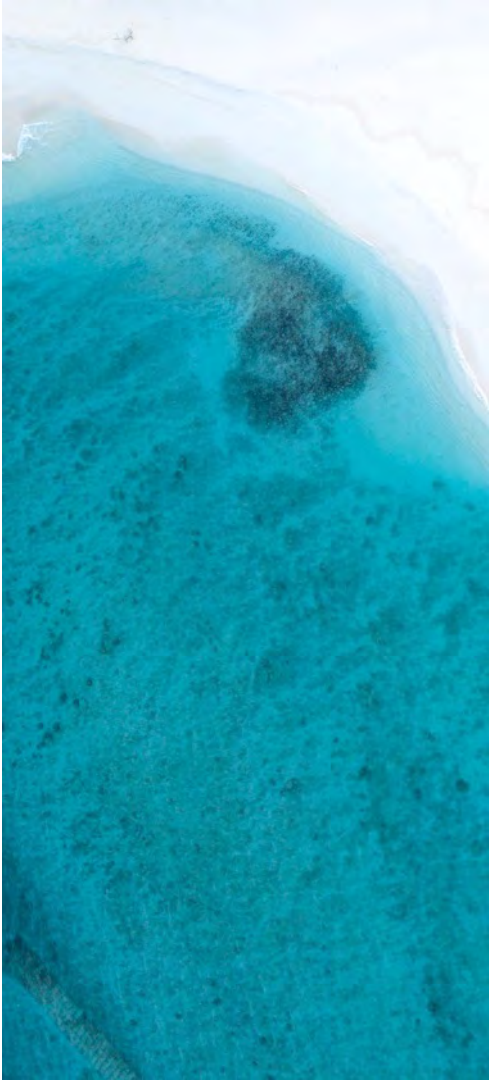
Couples traveling with us who are celebrating a special occasion such as an anniversary or honeymoon may purchase our Celebrations package which includes a bottle of champagne, special turndown amenities, a couple's massage at the onboard spa, and their choice of Epicurean Experience from The Shore Collection.

Packages can be booked 134 days prior to sailing.

For more information, please email special.services@ritz-carltonyachtcollection.com

*The Ritz-Carlton Yacht Collection does not perform legally binding ceremonies on board.
It is recommended for couples to hold a civil ceremony to ensure they meet local marriage law requirements.





ITINERARIES

2021-2023 SEASONS



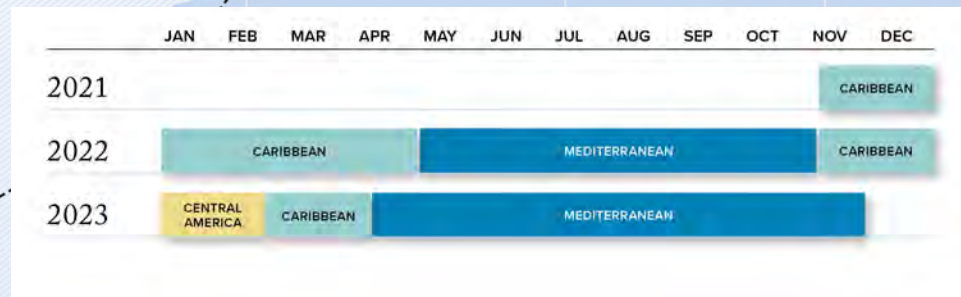
**CARIBBEAN &
CENTRAL AMERICA**

FALL 2021
WINTER AND FALL 2022
WINTER 2023



MEDITERRANEAN

SPRING AND SUMMER 2022
SPRING AND SUMMER 2023



2021 VOYAGE CALENDAR

SEASON HIGHLIGHTS

ABC ISLANDS

ARUBA

COLOMBIA

PANAMA

PUERTO RICO

ST. VINCENT AND THE
GRENADINES

VIRGIN ISLANDS

CARIBBEAN

DATE	NIGHTS	ITINERARY
NOV 10	7	SAN JUAN TO ST. LUCIA
NOV 17	7	ST. LUCIA TO ARUBA
NOV 24	8	ARUBA TO ARUBA
DEC 2	7	ARUBA TO BARBADOS
DEC 9	7	BARBADOS TO BARBADOS
DEC 16	7	BARBADOS TO SAN JUAN
DEC 23	10	SAN JUAN TO SAN JUAN



2022 VOYAGE CALENDAR

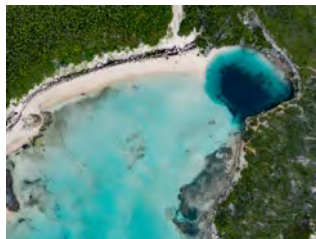
2022 SEASON HIGHLIGHTS

ADRIATIC COAST | AMALFI COAST | AZORES | BALEARIC ISLANDS | CARIBBEAN ISLANDS | GREEK ISLES | WINDWARD ISLANDS

CARIBBEAN

DATE	NIGHTS	ITINERARY
JAN 2	7	SAN JUAN TO SAN JUAN
JAN 9	7	SAN JUAN TO ST. MAARTEN
JAN 16	7	ST. MAARTEN TO BARBADOS
JAN 23	7	BARBADOS TO BARBADOS
JAN 30	7	BARBADOS TO ST. LUCIA
FEB 6	7	ST. LUCIA TO SAN JUAN
FEB 13	7	SAN JUAN TO SAN JUAN
FEB 20	7	SAN JUAN TO ST. MAARTEN
FEB 27	7	ST. MAARTEN TO ST. LUCIA
MAR 6	5	ST. LUCIA TO BARBADOS
MAR 11	9	BARBADOS TO ARUBA
MAR 20	8	ARUBA TO ARUBA
MAR 28	12	ARUBA TO FORT LAUDERDALE
APR 9	7	FORT LAUDERDALE TO FORT LAUDERDALE
APR 16	7	FORT LAUDERDALE TO FORT LAUDERDALE

NOV 5	11	LISBON TO BARBADOS
NOV 17	5	BARBADOS TO BARBADOS
NOV 22	5	BARBADOS TO ST. MAARTEN
NOV 27	7	ST. MAARTEN TO BARBADOS
DEC 4	7	BARBADOS TO ST. MAARTEN
DEC 11	7	ST. MAARTEN TO SAN JUAN
DEC 18	10	SAN JUAN TO SAN JUAN
DEC 28	7	SAN JUAN TO BARBADOS



MEDITERRANEAN

DATE	NIGHTS	ITINERARY
APR 23	13	FORT LAUDERDALE TO LISBON
MAY 6	11	LISBON TO BARCELONA
MAY 17	9	BARCELONA TO MARSEILLE
MAY 26	10	MARSEILLE TO ROME
JUNE 5	5	ROME TO VALLETTA
JUN 10	8	VALLETTA TO ATHENS
JUN 18	7	ATHENS TO ATHENS
JUN 25	7	ATHENS TO VENICE

JUL 2	7	VENICE TO DUBROVNIK
JUL 9	5	DUBROVNIK TO VENICE
JUL 14	9	VENICE TO ATHENS
JUL 23	7	ATHENS TO VENICE
JUL 30	7	VENICE TO ATHENS
AUG 6	7	ATHENS TO ATHENS
AUG 13	7	ATHENS TO ISTANBUL
AUG 20	11	ISTANBUL TO ATHENS
AUG 31	10	ATHENS TO VENICE
SEP 10	7	VENICE TO ROME
SEP 22	9	ROME TO ROME
OCT 1	7	ROME TO ROME
OCT 8	7	ROME TO BARCELONA
OCT 15	7	BARCELONA TO NICE
OCT 22	7	NICE TO BARCELONA
OCT 29	7	BARCELONA TO LISBON



2023 VOYAGE CALENDAR

2023 SEASON HIGHLIGHTS

PANAMA | COSTA RICA | CARIBBEAN ISLANDS | WINDWARD ISLANDS | AMALFI COAST | AZORES
BALEARIC ISLANDS | ADRIATIC COAST | CAPE VERDE | CANARY ISLANDS



CENTRAL AMERICA

DATE	NIGHTS	ITINERARY
JAN 4	10	BARBADOS TO PANAMA CITY
JAN 14	7	PANAMA CITY TO PUERTO CALDERA
JAN 21	7	PUERTO CALDERA TO PUERTO CALDERA
JAN 28	7	PUERTO CALDERA TO PANAMA CITY
FEB 4	10	PANAMA CITY TO FORT LAUDERDALE

CARIBBEAN

DATE	NIGHTS	ITINERARY
FEB 14	7	FORT LAUDERDALE TO FORT LAUDERDALE
FEB 21	7	FORT LAUDERDALE TO FORT LAUDERDALE
MAR 5	7	FORT LAUDERDALE TO SAN JUAN
MAR 12	7	SAN JUAN TO BARBADOS
MAR 19	7	BARBADOS TO BARBADOS
MAR 26	7	BARBADOS TO SAN JUAN
APR 7	7	SAN JUAN TO SAN JUAN
APR 14	13	SAN JUAN TO LISBON

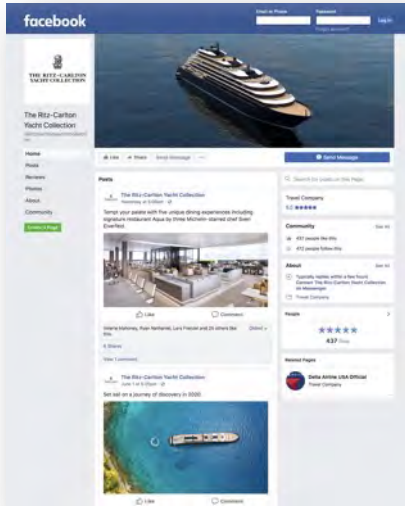
MEDITERRANEAN

DATE	NIGHTS	ITINERARY
APR 27	10	LISBON TO BARCELONA
MAY 7	10	BARCELONA TO ROME
MAY 17	7	ROME TO MARSEILLE
MAY 31	10	ROME TO VENICE
JUL 1	7	VALLETTA TO ROME
JUL 8	7	ROME TO NICE
JUL 15	7	NICE TO BARCELONA
JUL 22	11	BARCELONA TO ROME
AUG 2	10	ROME TO VENICE
AUG 12	7	VENICE TO DUBROVNIK
OCT 15	7	ROME TO BARCELONA
OCT 22	9	BARCELONA TO TENERIFE
OCT 31	7	TENERIFE TO TENERIFE
NOV 7	12	TENERIFE TO BARBADOS

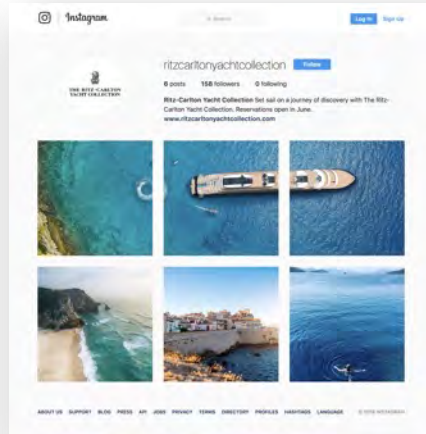
FOLLOW US ON SOCIAL



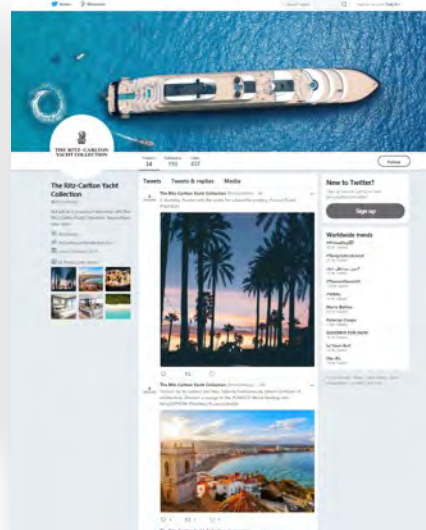
@ritzcarltonyachtcollection



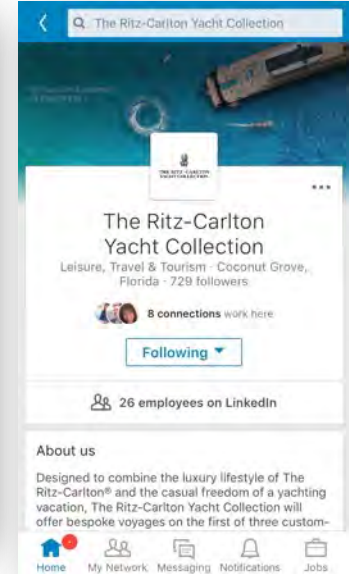
@ritzcarltonyachtcollection



@ritzcarltonyc



The Ritz-Carlton Yacht Collection





THANK YOU